

Gas Discharge Tube - PG26ME-L Series

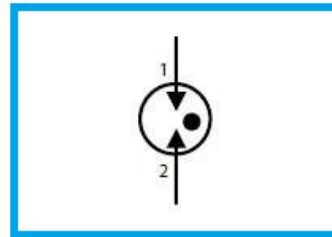
Features

- DC Spark-over voltage: 75~600V
- Low Capacitance
- Micro-Gap Design
- Stable breakdown voltage
- RoHS & HF compliant
- High holdover voltage
- High insulation resistance
- Large absorbing transient current capability.



Applications

- Communication equipment
- Test equipment
- Data lines
- CATV equipment
- Power Supplies
- Telecom SLIC protection
- Telecommunications

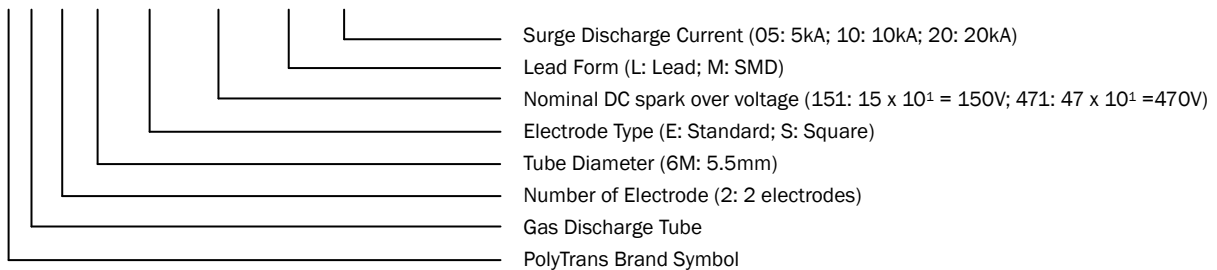


General Characteristics Definition

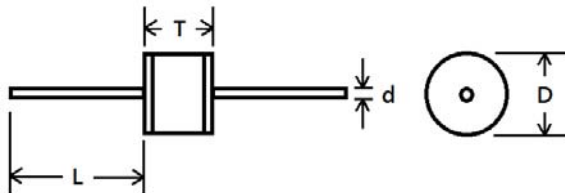
- Operating temperature: -40 ~ 85°C
- Storage temperature: -40 ~ 85°C

Part Number Code

P G 2 6M □ □ □ □ □ □



Physical Dimensions



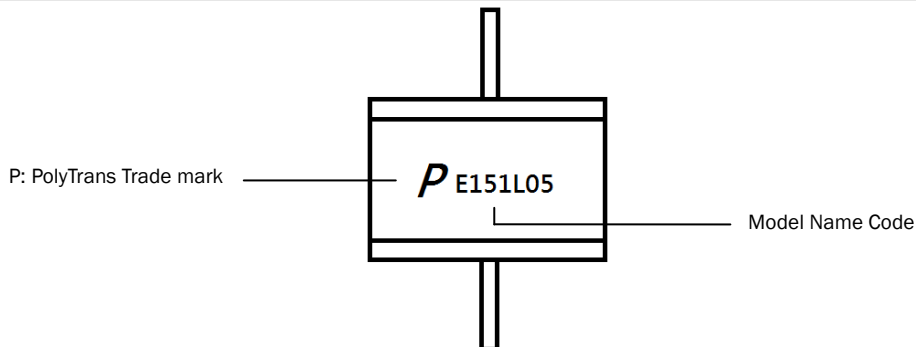
Symbol	Dimension (mm)
D	5.5±0.5
T	6.0±0.5
L	≥ 20.0
d	0.8±0.1

Gas Discharge Tube - PG26ME-L Series

Electrical Characteristics

Part Number	DC Spark-over Voltage @ 100V/S	Impulse Spark-over Voltage @ 1kV/ μ S	Impulse Discharge Current 8/20 μ S 10 Hits	AC Discharge Current 1s/5 Times	Minimum Insulation Resistance	Maximum Capacitance @ 1.0 MHz	UL Certificate (E474915)
	(V)	(V)	(kA)	(A)	(G Ω)	(pF)	
PG26ME075L05	75 \pm 20%	\leq 600	5	5	10	1.0	Pending
PG26ME091L05	90 \pm 20%	\leq 600	5	5	10	1.0	Pending
PG26ME151L05	150 \pm 20%	\leq 600	5	5	10	1.0	Pending
PG26ME201L05	200 \pm 20%	\leq 700	5	5	10	1.0	Pending
PG26ME231L05	230 \pm 20%	\leq 700	5	5	10	1.0	Pending
PG26ME301L05	300 \pm 20%	\leq 900	5	5	10	1.0	Pending
PG26ME351L05	350 \pm 20%	\leq 1000	5	5	10	1.0	Pending
PG26ME401L05	400 \pm 20%	\leq 1000	5	5	10	1.0	Pending
PG26ME471L05	470 \pm 20%	\leq 1200	5	5	10	1.0	Pending
PG26ME601L05	600 \pm 20%	\leq 1400	5	5	10	1.0	Pending

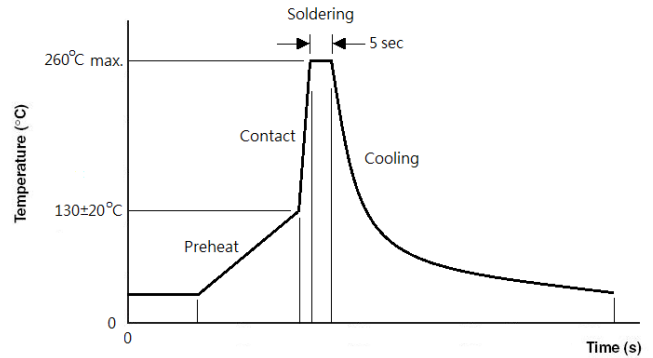
Marking Definitions



Gas Discharge Tube - PG26ME-L Series

Lead Free Wave Soldering Recommendations

Preheat	
- Temperature Min (T _{smin})	110°C
- Temperature Max (T _{smax})	150°C
- Time (T _{smin} to T _{smax})	30-90 seconds
- Average Ramp-Up Rate	1~3°C/second
Peak Temperature	260°C
Max Time at Peak Temperature	5 seconds
Ramp-Down Rate	5 °C /second max.



Note: If the wave soldering temperatures exceed the recommended profile, devices may not meet the performance requirements.

Packaging Information

Part Number	Quantity	
	EA/Tray	EA/Carton
PG26ME-L Series	100	5000