

## Gas Discharge Tube - PG25E-M Series

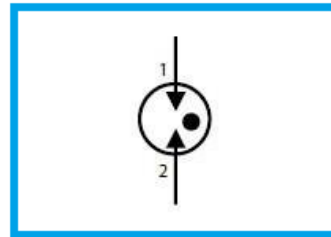
### Features

- DC Spark-over voltage: 75~600V
- Low Capacitance
- Micro-Gap Design
- Stable breakdown voltage
- RoHS & HF compliant
- High holdover voltage
- High insulation resistance
- Large absorbing transient current capability.



### Applications

- Communication equipment
- Test equipment
- Data lines
- CATV equipment
- Power Supplies
- Telecom SLIC protection
- Telecommunications

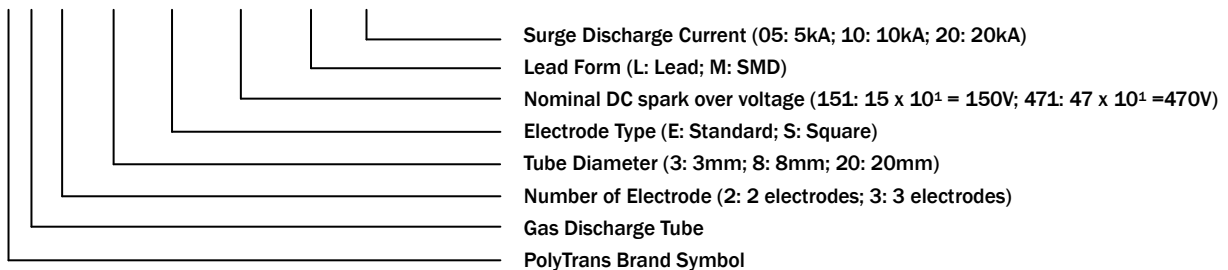


### General Characteristics Definition

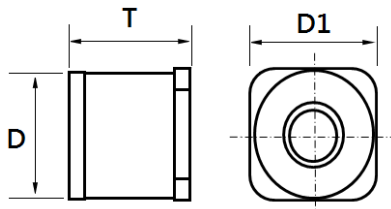
- Operating temperature: -40 ~ 85°C
- Storage temperature: -40 ~ 85°C

### Part Number Code

P G □ □ □ □ □ □ □ □ □ □

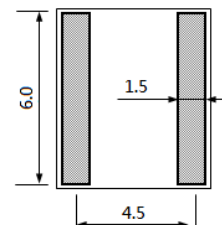


### Physical Dimensions



Symbol	Dimension (mm)
D	5.0±0.5
T	5.0±0.5
D1	5.3±0.5

#### Solder pad layout

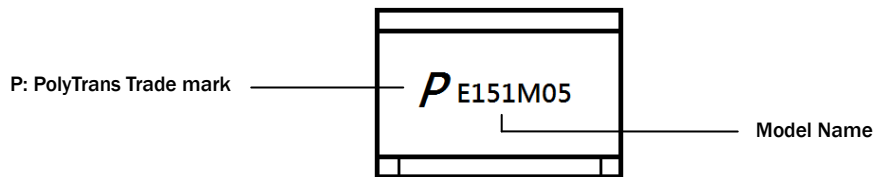


## Gas Discharge Tube - PG25E-M Series

### Electrical Characteristics

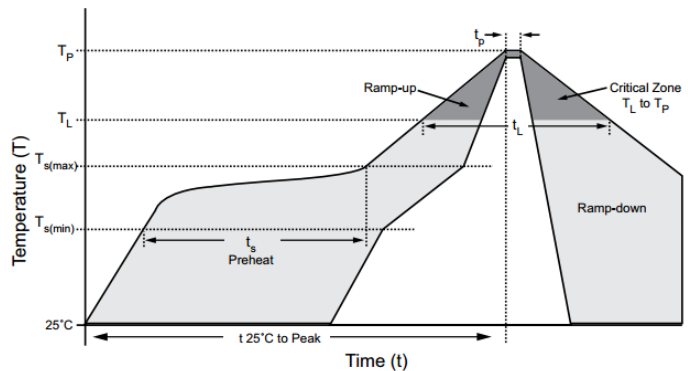
Part Number	DC Spark-over Voltage @ 100V/S	Impulse Spark-over Voltage @ 1kV/ $\mu$ S	Impulse Discharge Current 8/20 $\mu$ s 10 Hits	AC Discharge Current 1s/5 Times	Minimum Insulation Resistance	Maximum Capacitance @ 1.0 MHz	UL Certificate (E474915)
	(V)	(V)	(kA)	(A)			
PG25E075M05	75 $\pm$ 20%	$\leq$ 600	5	5	1	1.0	✓
PG25E091M05	90 $\pm$ 20%	$\leq$ 600	5	5	1	1.0	✓
PG25E151M05	150 $\pm$ 20%	$\leq$ 600	5	5	1	1.0	✓
PG25E201M05	200 $\pm$ 20%	$\leq$ 700	5	5	1	1.0	✓
PG25E231M05	230 $\pm$ 20%	$\leq$ 700	5	5	1	1.0	✓
PG25E301M05	300 $\pm$ 20%	$\leq$ 900	5	5	1	1.0	✓
PG25E351M05	350 $\pm$ 20%	$\leq$ 1000	5	5	1	1.0	✓
PG25E401M05	400 $\pm$ 20%	$\leq$ 1000	5	5	1	1.0	✓
PG25E471M05	470 $\pm$ 20%	$\leq$ 1200	5	5	1	1.0	✓
PG25E601M05	600 $\pm$ 20%	$\leq$ 1400	5	5	1	1.0	✓

### Marking Definitions



### Lead Free Reflow Soldering Recommendations

<b>Preheat</b>	
- Temperature Min (T <sub>smin</sub> )	150°C
- Temperature Max (T <sub>smax</sub> )	200°C
- Time (T <sub>smin</sub> to T <sub>smax</sub> )	60-180 seconds
- Average Ramp-Up Rate	1~3°C/second
<b>Peak Temperature</b>	260°C max.
<b>Time within 5°C of actual Peak Temperature (t<sub>p</sub>)</b>	40 seconds max.
<b>Ramp-Down Rate</b>	6 °C /second max.

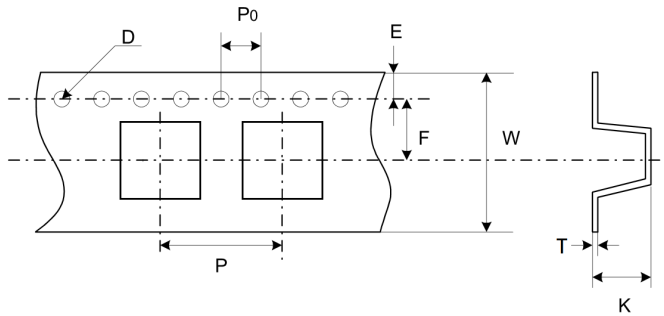


Note: If the reflow soldering temperatures exceed the recommended profile, devices may not meet the performance requirements.

## Gas Discharge Tube - PG25E-M Series

### Packaging Information

Part Number	Quantity	
	EA/Roll	EA/Carton
PG25E-M Series	1500	12000



Dimension	Millimeters
P	$8.0 \pm 0.1$
P0	$4.0 \pm 0.1$
D	$1.55 \pm 0.05$
E	$1.75 \pm 0.1$
F	$7.5 \pm 0.1$
W	$16.0 \pm 0.3$
T	$0.40 \pm 0.05$
K	$5.45 \pm 0.10$